



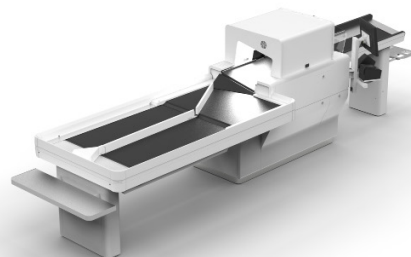
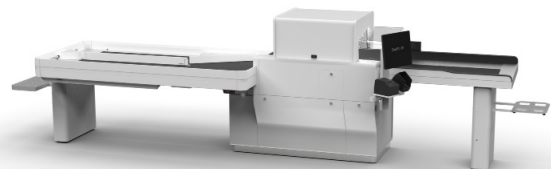
EasyFLOW

Fully Automated Checkout

- Highest level of security. EasyFLOW MatchX Technology™ identifies the products for what they really are and not only by what the barcode says.
- As fast as conventional checkouts.
- Self learning software.
- Significant cost saving.
- 24/7 availability.
- Compatible with all POS systems. The ITAB SCO-API protocol makes integration simple.

EasyFLOW is the first self checkout that identifies products with more than 99% certainty without the need for barcodes. The system does not rely on barcodes, but uses a number of sensors to establish what is really passing through the tunnel. This automated self checkout minimizes shrinkage and increases safety in the self checkout arena.

Through continuous collection of information and product data, the system builds a unique identity for each product. The identity consists of data from multiple sensors which makes the system very difficult to cheat.



ITAB GROUP

ITAB develops, sells, manufactures and installs complete shop fitting concepts for retail chain stores. The all-inclusive offer includes custom-made fitting concepts, innovative solutions for checkout arena and professional lighting systems. ITAB is the market leader at checkout to retailers in Europe, and one of Europe's largest supplier of shop fitting concepts and lighting systems.



Main Features



MatchX Technology™

MatchX consists of six different sensor technologies and nine different classifiers with unique algorithms which are all linked into a unique network.



Self Learning System:

Through continuous self-learning, MatchX™ builds the required level of identification information to select and identify articles.



Fully Automated Checkout:

The first automated checkout solution that boasts a product identification ratio of more than 99%, including fruit and vegetables. All without the need of barcodes.



Easy to Use:

The only thing the customer needs to do is to put their articles on the belt just like in a conventional checkout. The rest is handled by the system and the articles appear on the receipt.



Significant Cost Saving:

Reduces total checkout staffing levels by a minimum of 50%. One staff member can support shoppers from 2 to 4 units depending on the preferred service level.



Custom Colouring:

EasyFlow can be delivered in any colour or multiple colours to match every type of customer requirement.

24 / 7

24/7 Availability:

Checkout lanes are available 24 hours a day 7 days a week.



Card/Cash Payment:

EasyFlow can be equipped with several different card or card/cash solutions to meet every customer requirement.

EasyFLOW Version EU:

Frequency: 50 Hz
Voltage: 230 VAC +/- 10 %
Standby (All motors off, rest on): 460 W +/- 10%
Nominal power (in use): 2200 W +/- 10%
Absolute maximum power: 3000 W +/- 10%

EasyFLOW Version US:

Frequency: 60 Hz
Voltage: 115 VAC +/- 10%
Standby (All motors off, rest on): 460 W +/- 10%
Nominal power (in use): 2200 W +/- 10%
Absolute maximum power: 3000 W +/- 10%

CO Weighing System:

Weighing range: 5 to 15000 grams
Weighing resolution: 5 gram

Measurements: (EF 1.7)

EasyFLOW:

Length: 4840 mm
Width: 1175 mm
Height: 1435 mm
(excluding basket shelf and packing shelf)

EasyFLOW is also available with a +500 mm outfeed.

